

The background is a vibrant Aboriginal artwork. It features a central black figure with white and red markings, possibly representing a person or a spirit. The figure is surrounded by white dots and lines, suggesting a map or a celestial pattern. A large, stylized sun with a central circle and radiating lines is visible on the right side. The overall color palette includes deep blues, greens, and earthy tones.

Collaborative model for research with Aboriginal people



APOCC

Loren Brener, Rebecca Gray, Magdalena Harris, Clair Jackson, Priscilla Johnson, Christy Newman, Veronica Saunders, Carla Treloar



Aims of the APOCC Project

- To determine whether Aboriginal people are being diagnosed with cancer later
- Describe barriers to Aboriginal people being diagnosed with cancer and accessing treatment
- To describe the care that Aboriginal people with cancer are receiving
- To compare level and types of care with non- Aboriginal people



Overview of project

- APOCC study, managed by The Cancer Council NSW & UNSW
- funded by National Health and Medical Research Council (NHMRC) 2007-2011 on a health services grant
- Consists of qualitative and quantitative arm
- NCHSR at UNSW manages qualitative arm



Qualitative arm of APOCC

- In-depth interviews with
 - Aboriginal people with cancer (n=30)
 - Carers of Aboriginal people with cancer (n=25)
 - Health care workers (n=25)
- Aim is to establish the experiences of people with cancer, their carers, and their health care workers.
- Based on information gathered from pilot project.



Project

- Qual interviews with Aboriginal cancer patient, carers and health care workers (and non-Aboriginal) in NSW
- Planned to employ Aboriginal interviewers but experience so much more than casual employment
- Developed a collaborative and sophisticated model of working



Context

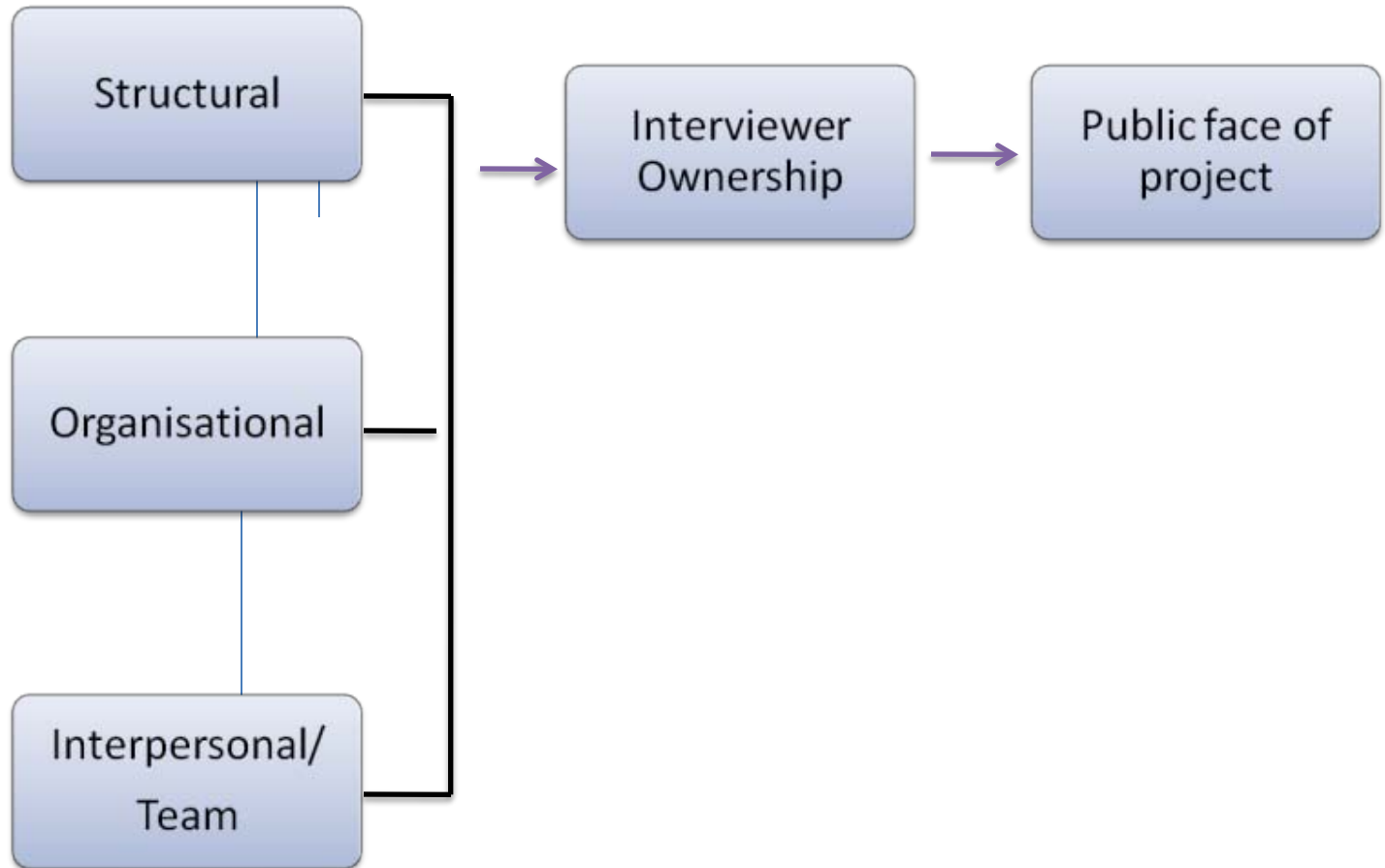
Cancer in Aboriginal communities:

Not spoken about, outside of Aboriginal experience

Doesn't have the same profile as chronic illnesses e.g. diabetes, heart disease

Exploring an "invisible" condition within history of trauma and racism

“Look. Listen. (Learn)”

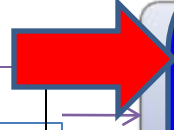


“Look. Listen. (Learn)”

Structural

Organisational

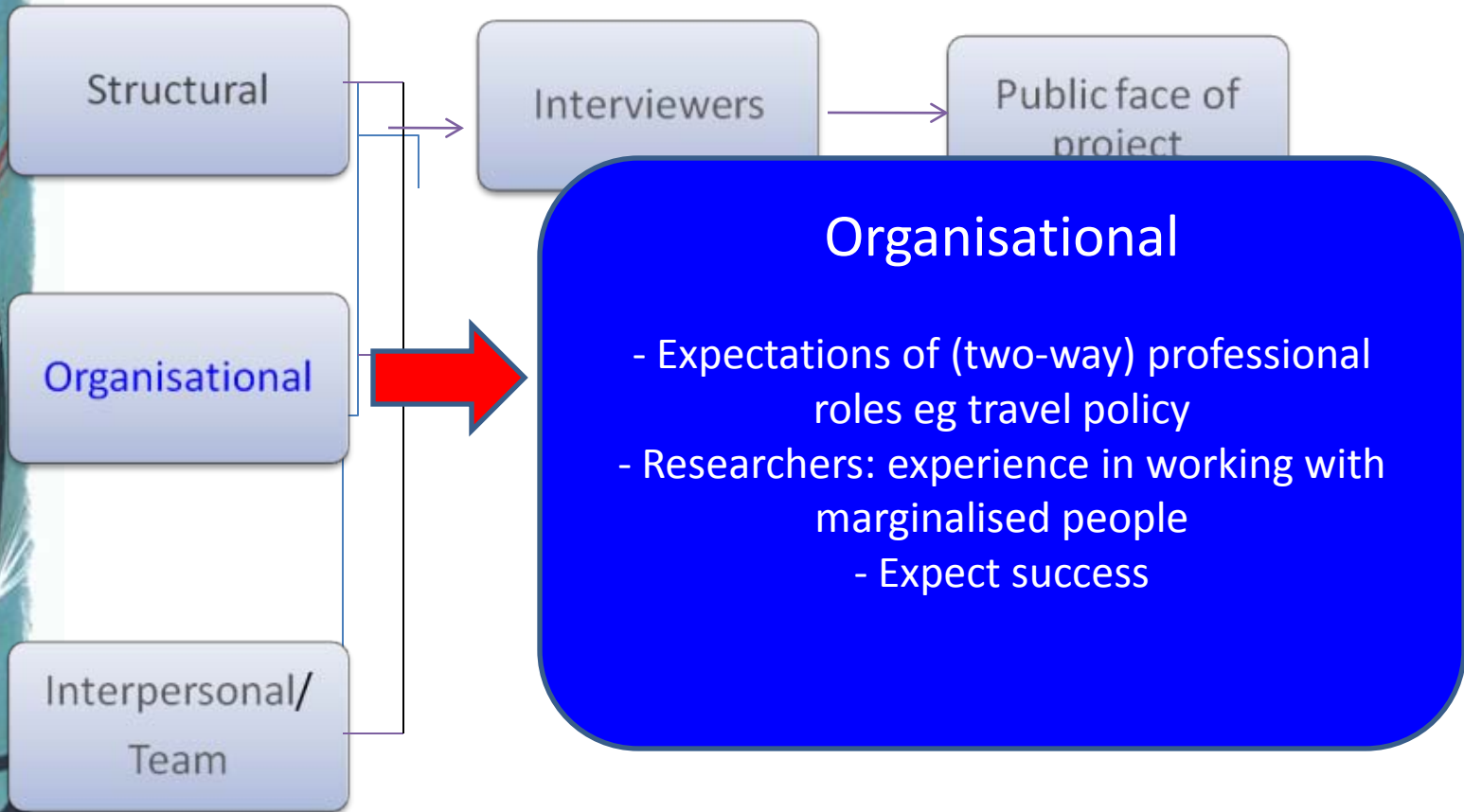
Interpersonal/
Team



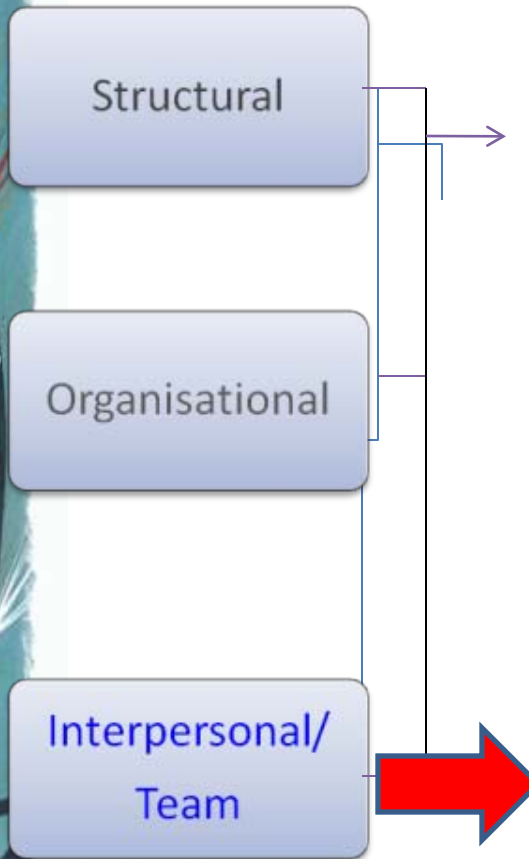
Structural

- Time frame and budget of the grant
- Allowed flexibility and organic process; acknowledgement of small gains; allow pauses, not seen as failures
- Goals for process not pre-determined
- Cultural safety as key priority

“Look. Listen. (Learn)”



“Look. Listen. (Learn)”



Interpersonal/Team

- Continuing face-to-face meetings incl (positive) debriefings to indentify success
 - Appt of elder as cultural mentor; development of team relationships
 - Sharing of cultural protocols/insights
- “walk the talk”: acknowledge expertise of all members
 - More than 1 Aboriginal member
- Taking up opportunities for capacity development
 - Flat structure
 - Building trust
- Strengths in diversity of members

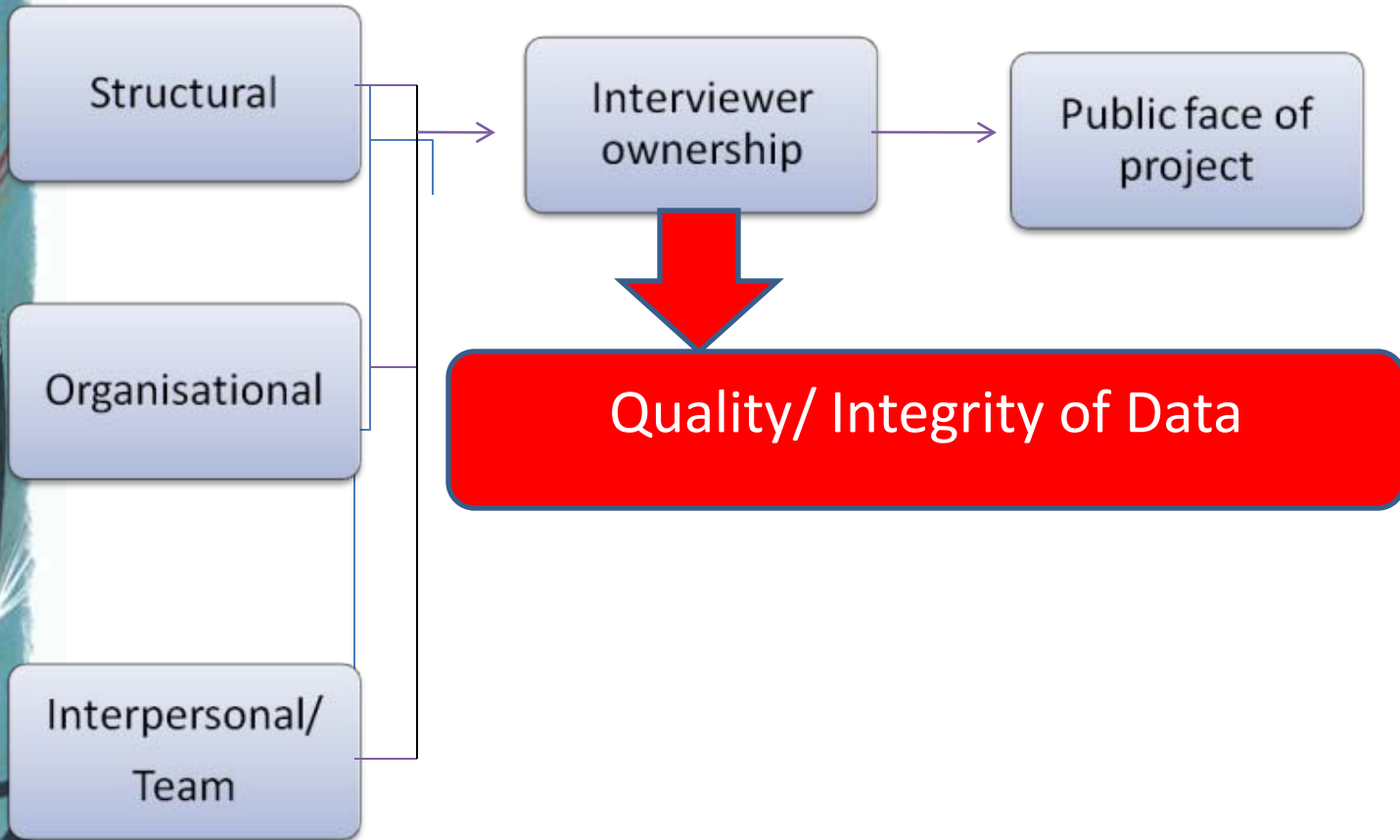
“Look. Listen. (Learn)”



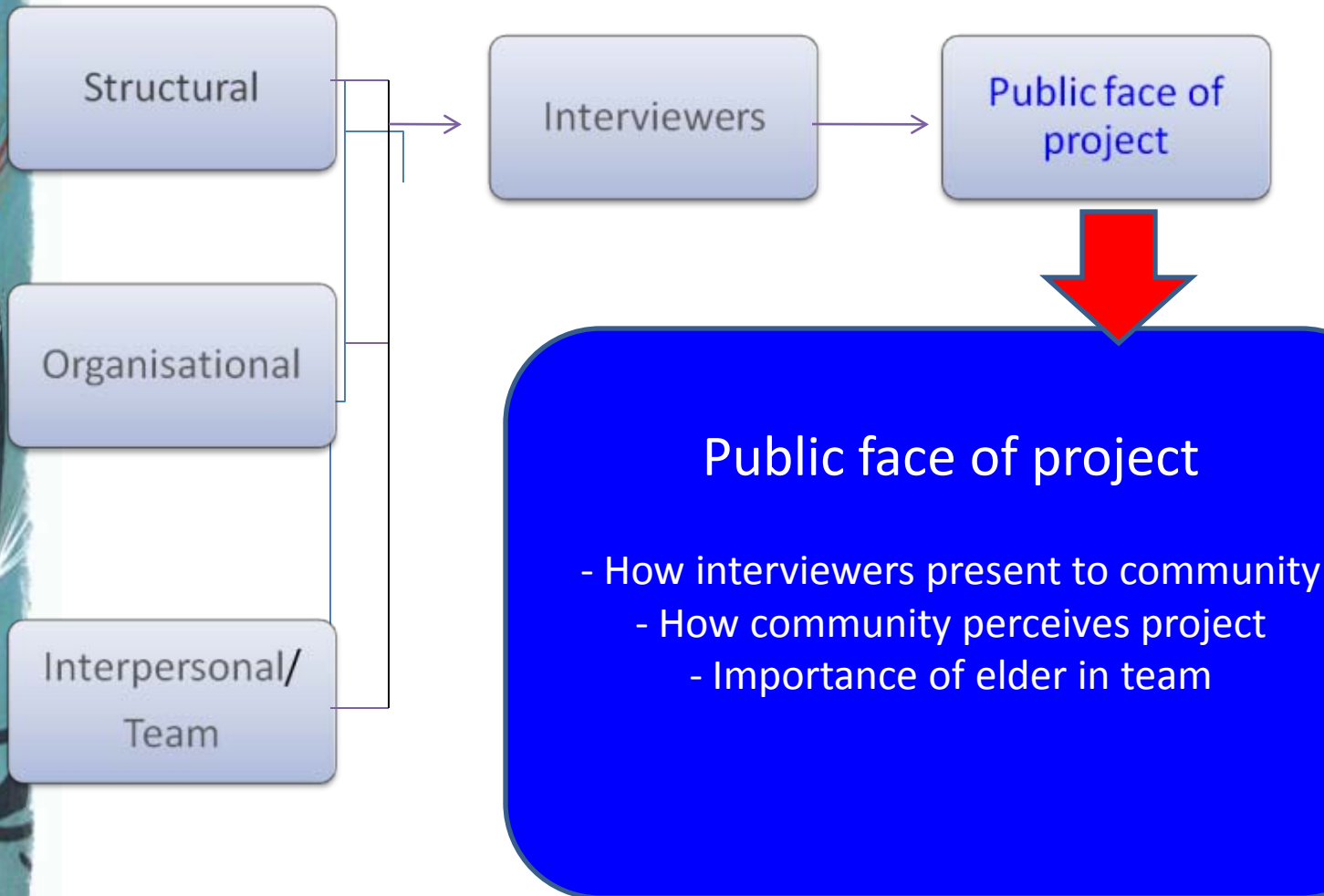
Interviewer Ownership

- Legitimately empowered to: ask questions, make requests, amend schedule, have significant roles in transcript “cleaning” and analysis
 - Autonomy in the field
 - “Witness” participants
- Project has low impact on Aboriginal life (interviewers feel “looked after” at work)

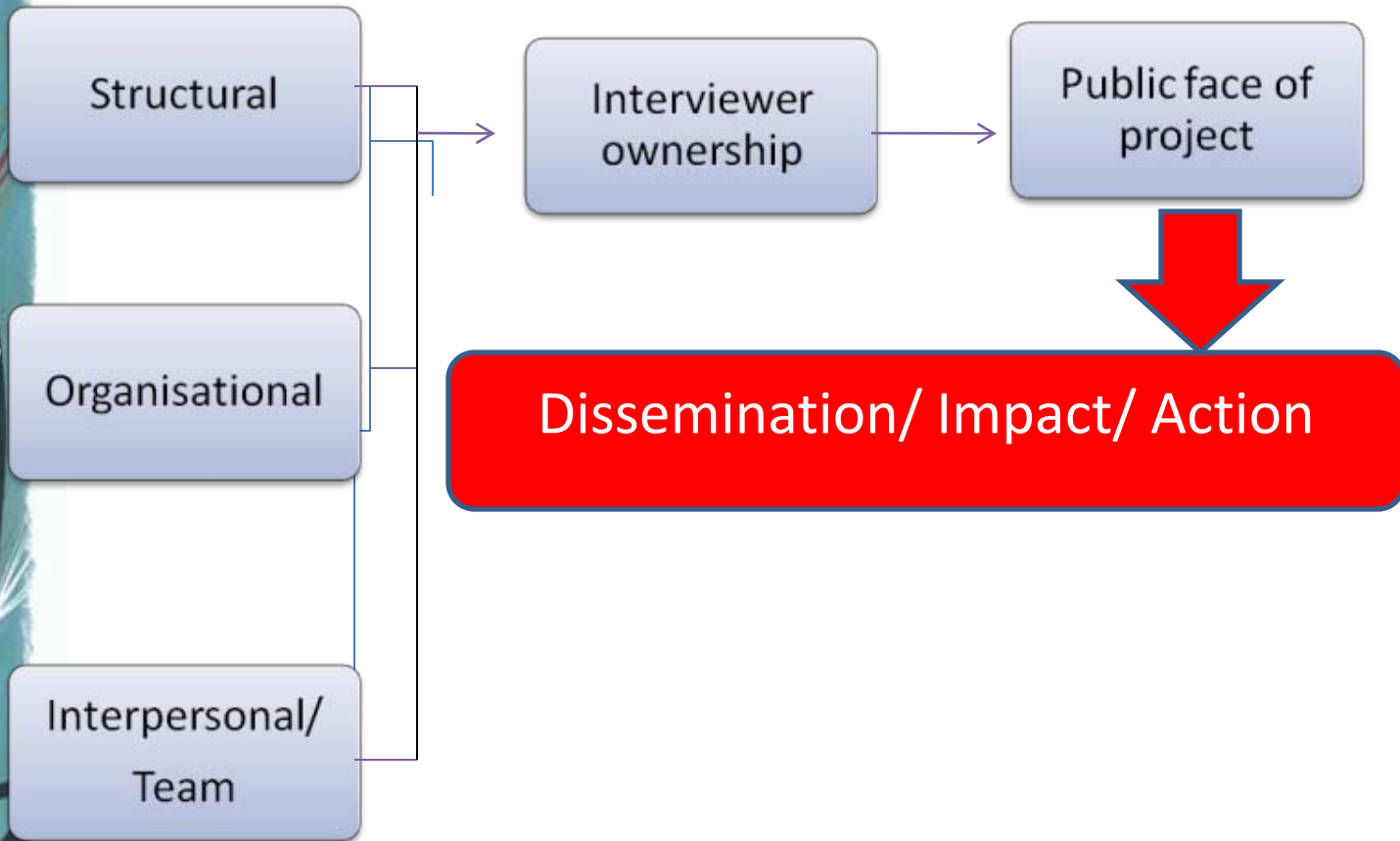
“Look. Listen. (Learn)”



“Look. Listen. (Learn)”



“Look. Listen. (Learn)”





Limitations

- Gender (all Aboriginal staff are women)
- Recruitment (word of mouth)
- Retention of workers
 - Casual work
- Partnership Roles